

# Policies for a Healthier, More Equitable New Jersey

Applicant Webinar



**November 21, 2019**

# Platform Logistics

## **You are on mute!**

- Use the “Chat” function for comments

## **Having technical difficulties?**

- Contact RingCentral for support at 1-800-595-8110
- A link will be available for playback in the resource section of *my.rwjf.org* or at *www.rwjf.org/cfp/pinj* in case you miss anything

## **There will be a Q&A at the end of the presentation**

- Use the “Q&A” function to submit a question

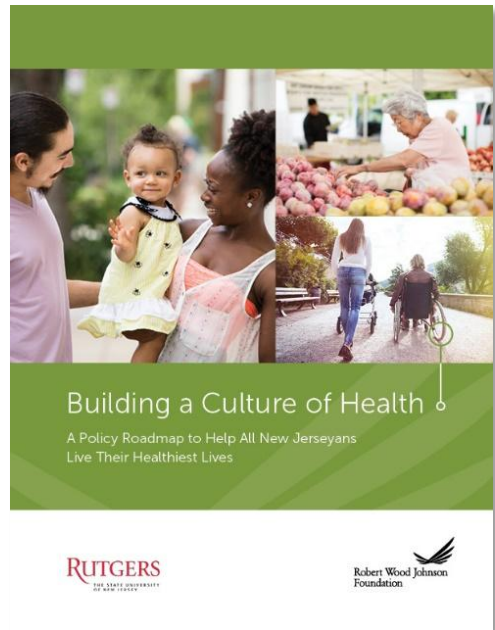


# **“Building a Culture of Health: A Policy Roadmap to Help All New Jerseyans Live Their Healthiest Lives”**

Download the report at [www.rwjf.org/nj](http://www.rwjf.org/nj)

# How We Got Here

- RWJF, Rutgers University
- Statewide Advisory Group
- Stakeholder & Grantee Meetings
- 5 Community Conversations
- Statewide Surveys & Polls
- Assessment of Evidence



# Report Overview



Economic  
opportunity, income,  
and poverty



Access to  
high-quality,  
affordable health  
care services



Maternal  
and child health,  
and supports  
for struggling  
families



Housing,  
education, and  
transportation



Engaging residents  
and communities in  
state policy decisions



## Equality



## Equity



# A Roadmap to Get Us from Here to There

- **13 policy priorities**

- **3 policy areas:**

- Healthy children & families
- Healthy communities
- High-quality, equitable health and social service systems

- **Goal:**

- Advance equity-promoting, evidence-based policies to help all New Jerseyans live their healthiest lives



# Healthy Children & Families

1. Improve maternal and infant health outcomes by enhancing care, support, and prevention
2. Ensure maximum uptake of the recently expanded paid family leave benefit, particularly among low-income workers
3. Increase access to high-quality early education for all of New Jersey's 3 and 4-year-olds, with a continued focus on children living in poverty
4. Boost the incomes of families supported by low- and moderate-wage workers to promote financial stability and economic opportunity





# Healthy Communities

1. Ensure New Jerseyans have equitable access to safe, affordable, and stable housing in the communities where they choose to live
2. Prevent childhood lead poisoning by maximizing state and federal funding and ensuring properties are lead-safe through inspection, remediation, and enforcement
3. Expand equitable access to healthy food in communities and schools
4. Ensure all roads, sidewalks, and public transit systems are safe and accessible to all potential users
5. Reduce tobacco use disparities through price increases and cessation programs



# High-Quality, Equitable Health & Social Service Systems

1. Shift the health care system's focus toward delivering whole-person care, working with other systems to promote overall health and well-being
2. Ensure access to comprehensive, integrated mental health and addiction services
3. Improve access to health and social services throughout the state by leveraging technology
4. Foster collaboration within and across state agencies to improve health equity



# **Call for Proposals: Policies for a Healthier, More Equitable New Jersey**

# The Purpose

**The focus of this CFP is on advancing the Roadmap's statewide policy recommendations through a range of strategies, including, but not limited to;**

- policy advocacy and analysis,
- strategic communications,
- community organizing and resident engagement, and
- technical assistance provided to state agencies.

**To achieve this goal, the Foundation is offering up to 9 awards totaling 2.55 million dollars.**



# Award Categories & Types of Projects We Seek

- **Policy Change awards:**

Up to three, two-year projects of up to \$500,000 each focused on statewide policy changes that can be meaningfully advanced in the next several years

- **Policy Field-Building awards:**

Up to six, two-year projects of up to \$175,000 each focused on laying the groundwork for statewide policy change that may require more time to come to fruition.



# Who's Eligible to Apply

## Any organization applying must:

- Be based in New Jersey and serve the residents of the state
- Be either public entities or nonprofit organizations that are tax-exempt under Section 501(c)(3) of the Internal Revenue Code, and are classified as public charities under Section 509 of the Code
- Have a demonstrated history of effectively managing grant funds such as foundation or government grants
- Have a track record of successfully contributing to policy change — adoption or implementation — in New Jersey at the state, regional, or local levels
- Demonstrate an organizational commitment to health equity
- Identify which organization is the lead if a proposal is submitted by a team of organizations



# Application Process

## **Proposals must be submitted via the RWJF online system**

- Visit *[www.rwjf.org/cfp/pinj](http://www.rwjf.org/cfp/pinj)* and use the appropriate “Apply Online” link based on the type of award you’re applying for
- If you haven’t done so already, you’ll be required to register at *[my.rwjf.org](http://my.rwjf.org)* before you begin the application process



# Your Application

**Proposals should be no more than five, single-spaced pages and should include:**

- Specific policy priorities and recommendations being addressed
- Strategy, tactics, and partnerships
- A detailed budget and budget narrative
- CV's of the project director and key staff, and a high-level timeline (with quarterly or biennial milestones) as an appendix

*\*The appendix does not count toward the page limit*

**Please reference the CFP for detailed instructions and required application elements**





# Selection Criteria

- Clear identification of policy priorities and recommendations
- Clear, compelling plan for advancing the identified policy recommendations
- Track record of successfully contributing to policy change
- Commitment to health equity
- Engagement of diverse stakeholders
- Ability to place the work funded through these awards in a larger organizational context
- Administrative and financial capacity



# Timeline

<b>Deadline for receipt of proposals</b>	<b>January 14, 2020 at 3:00 p.m. ET</b>
<i>Review period</i>	<i>Late January to early May</i>
<b>Applicants will be notified of their proposal status</b>	<b>Mid-March</b>
<b>Grantees are announced and grants begin</b>	<b>May 15, 2020</b>



# Q&A

## **Submit questions through the “Q&A” function**

- Program-specific Frequently Asked Questions (FAQs) can be found in the Resources section of *my.rwjf.org* and at *www.rwjf.org/cfp/pinj* and will be regularly updated.
- Please check the FAQs before contacting the Foundation.





# Thank you!

Download the CFP and review FAQ's at [www.rwjf.org/nj](http://www.rwjf.org/nj)

Email questions to: [NJPolicy@rwjf.org](mailto:NJPolicy@rwjf.org)

